

Genius-RO Series

Introduction

The Genius-RO Series pure water system combines advanced reverse osmosis technology with intelligent control features to deliver high-quality purified water from tap water sources. Built around premium reverse osmosis membranes and comprehensive filtration technology, the system features automated operation, real-time monitoring via LCD display, and professional storage solutions with quality maintenance systems.

Application

- Feed water for ultra-pure water systems in laboratories
- General chemical applications
- Laboratory glassware cleaning
- Autoclave and climate chamber water supply
- Buffer solution preparation

Features

1. Advanced Control System

- Fully automatic microcomputer control with intelligent operation management
- Large LCD screen displaying real-time monitoring of temperature, conductivity, water tank level, and other operational parameters

2. Superior Filtration Technology

- Advanced pretreatment design ensures every drop of water passes through activated carbon
- Integrated filling technology effectively removes organic chlorine and residual chlorine



Genius-RO-15/30/2-15



Genius-RO-100/200/2-100

- Premium reverse osmosis membrane with flow limitation design
- Automatic membrane cleaning function extends membrane lifespan

3. Professional Storage Solution

- Equipped with cylindrical multi-functional water tank
- 5-level liquid level meter and pump control system for flexible water production
- Air filter for storage tank ensures water quality maintenance

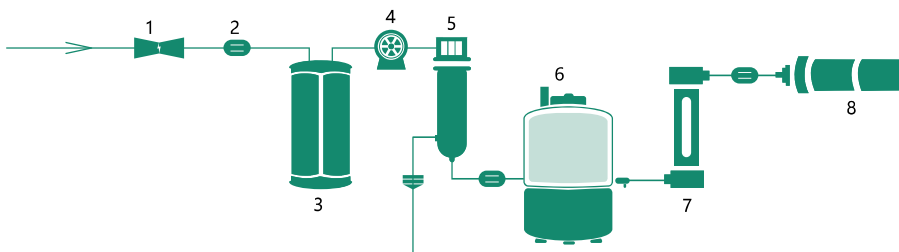
4. Data Management

- RS232 interface for automatic data storage and transmission
- Comprehensive monitoring and recording capabilities

5. Quality Assurance

- Comprehensive quality control system
- Reliable performance and consistent water quality

Genius-RO



1 Solenoid Valve

2 Conductivity Sensor

3 Pre-treatment Module

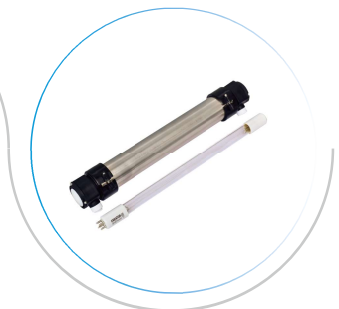
4 Boost Pump

5 RO Module

6 Water Tank

7 254nm UV Lamp

8 Micro-Filtration Cartridge



Technical Specifications

Model	Genius-RO-15/30/2-15	Genius-RO-100/200/2-100
Type	Bench top	Floor type
Feed Water Requirement		
Source	Tap water	Tap water
Conductivity*	<2000us/cm	<2000us/cm
Hardness**	<450ppm as CaCO ₃	<450ppm as CaCO ₃
Pressure	0.05-0.5MPa(7-72psi)	0.1-0.4MPa(14-58psi)
Temperature	5-40 ℃	5-40 ℃
Pure Water(Class III)		
Ionic Rejection	>95%	>95%(RO2 > 99%)
Bacteria Rejection	>99%	>99%
Conductivity	1-20us/cm(RO-2 < 5us/cm)	1-20us/cm(RO-2 < 5us/cm)
Electrical Requirements		
Electrical Voltage	110V/220V±10%	110V/220V±10%
Electrical Frequency	50HZ/60HZ±10%	50HZ/60HZ±10%
Net weight		
Main units	21kg	74/76/78kg
Water tank	5kg	-/-/35kg
Dimensions(W*D*H)		
Main units	315*525*570mm	650*660*1260mm
Water Tank	380*380*595mm	N/A

*If feed water quality is poor(Conductivity >1000us/cm),strengthened pretreatment module and RO-2 type is highly recommended;

**When hardness of feed water is high(>450ppm as CaCO₃),0.5T water soften is recommended