



# M500

## Centrifuge



# M500 Centrifuge

NEW



## Application

M500 low-speed centrifuge is commonly used for bacteria, infectious virus separation, nucleic acid separation, gradient density centrifugation, blood separation, and clinical test sample processing.

## Introduction



## Features

- Smaller footprint, saving valuable laboratory space;
- A wide range of rotor and adapter options, suitable for all commonly used centrifuge tubes, vacuum blood collection tubes, etc.;
- The airtight rotor is suitable for centrifugation of dangerous samples, such as viruses, blood samples, pathogens and other biological samples that are easy to form aerosols;
- The rotor automatically recognizes the current maximum rotor speed and can also be manually set and unbalanced to ensure centrifugal safety;
- The separate Flash instant centrifugal button, press and turn;
- The electric suction double door lock design, a light press can quickly close the door cover, quieter and safer;
- The centrifugal door cover adopts double gas rod support to make the door opening and closing smoother and the opening height lower;
- 10 custom storage programs/5 quick storage programs on the panel are more convenient and quick;
- The centrifugal chamber adopts Teflon coating to resist the centrifugation of highly corrosive samples;
- The door cover seal is formed by an imported gas phase rubber integrated mold, which is suitable for long-life use and has a better sealing effect;
- The 5-inch IPS full-view 16 million chromaticity true color LCD displays more detailed test parameters, and the brightness is adjustable, which fully meets health demands;
- The external USB2.0 interface facilitates system upgrades and experimental data downloads;
- The built-in start timing and stable timing can effectively calculate the centrifugal efficiency;
- A variety of shutdown music ringtones, the music and prompt tone duration can be adjusted, making the experiment more comfortable; the display interface supports Chinese and English menu switching;

## Bucket and adapters



M500-S-1 rotor  
4000rpm/3040×g



5D-1 bucket (Bio-safety)  
250ml×4  
4000rpm/3040×g



5D-1.1 adapter  
50ml×8+15ml×8  
4000rpm/3040×g



5D-1.2 adapter  
50ml×8+5ml×16  
4000rpm/3040×g



5D-1.3 adapter  
15ml×28  
4000rpm/3040×g



5D-1.4 adapter  
100ml×4  
4000rpm/3040×g



5D-1.5 adapter  
5ml×40  
4000rpm/3040×g



M500-S-2 rotor  
4000rpm/3095×g



5D-2 bucket  
500ml×4  
4000rpm/3095×g



5D-2.1 adapter  
250ml×4  
4000rpm/3095×g



5D-2.2 adapter  
50ml×16  
4000rpm/3095×g



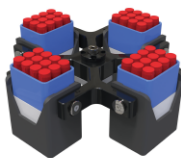
5D-2.3 adapter  
15/10ml×36  
4000rpm/3095×g



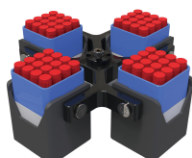
5D-2.4 adapter  
100ml×12  
4000rpm/3095×g



5D-2.5 adapter  
5ml×84  
4000rpm/3095×g



5D-3 vacuum blood tube  
5ml×48  
4000rpm/3050×g



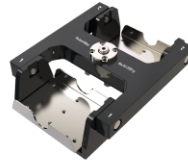
5D-4 vacuum blood tube  
5ml×64  
4000rpm/3050×g



5D-5 rotor  
15ml×12  
6000rpm/5150×g



5D-6 rotor  
50ml×8  
6000rpm/5150×g



5D-7 microplate rotor  
microplate 4×2×96  
Deep-well 2×2×96  
4000rpm/2860×g



5D-5.1 adapter  
5ml



5D-5.2 adapter  
8ml



5D-6.1 adapter  
15ml

## Specifications

Model	M500
Power supply	AC220V/50 ~ 60Hz
Input power	650W
Maximum capacity	2000ml(500ml×4)
Speed range	200~6000rpm/increment 10rpm
Speed accuracy	±10rpm
Maximum RCF	5150×g/increment 10×g
Motor	Maintenance-free brushless DC variable frequency motor
Time range	1-99 hours/1-59 minutes/1-59 seconds; accuracy ±1 second
Drive control system	FOC vector sine wave drive
Control method	Physical buttons + knobs
Display Mode	True color LCD display/resolution 800×480dpi
Program storage	10 built-in storage programs/5 panel shortcut program calls
Door cover locking method	Electronically controlled automatic suction double lock
Fastest acceleration time [sec]	30s/9th gear
Fastest deceleration time [sec]	25s/10 gears, free stop at 0 gear
Dimensions: length x width x height	450mm×550mm×340mm
Weight (without rotor)	53Kg
Noise level at maximum speed(≈)	≤60dB(A)
Protection level	IP20
Ambient temperature/relative humidity	+5~40°C/80%
Interference suppression standards	EN 61010-1, EN 61010-2-020, EN 61326-1, EN 61010-3-2/A2

Note: When the ambient temperature is 23°C

## Bucket & Rotor Information

Product No.	Model	Tube types and sizes	Applies to	Standard/Optional
M.05.013	M500	-	-	Main unit
L.05.003	M500-S-1	-	Main unit	Optional
L.03.041	5D-1	PP flat bottom with cover	M500-S-1	Optional
L.06.019	5D-1.1	PP cone bottom with cover	5D-1	Optional
L.06.020	5D-1.2	PP cone bottom with cover	5D-1	Optional
L.06.021	5D-1.3	PP cone bottom with cover	5D-1	Optional
L.06.022	5D-1.4	PP round bottom with cover	5D-1	Optional
L.06.026	5D-1.5	Vacuum blood collection tube 13×100mm	5D-1	Optional
L.05.010	M500-S-2	-	Main unit	Optional
L.03.046	5D-2	PP flat bottom with cover	M500-S-2	Optional
L.06.046	5D-2.1	PP flat bottom with cover	5D-2	Optional
L.06.047	5D-2.2	PP cone bottom with cover	5D-2	Optional
L.06.048	5D-2.3	PP cone bottom with cover	5D-2	Optional
L.06.049	5D-2.4	PP round bottom with cover	5D-2	Optional
L.06.050	5D-2.5	Vacuum tube 13×100mm	5D-2	Optional
L.03.044	5D-3	Vacuum tube 13×100mm	Main unit	Optional
L.03.045	5D-4	Vacuum tube 13×100mm	Main unit	Optional
L.02.001	5D-5	PP round/conical bottom with cover	Main unit	Optional
L.02.002	5D-6	PP round/conical bottom with cover	Main unit	Optional
L.03.017	5D-7	Microplate 4×2×96/Deep 2×2×96	Main unit	Optional
L.06.017	5D-5.1	Vacuum tube 13×100mm	5D-5	Optional
L.06.018	5D-5.2	Vacuum tube 16×100mm	5D-5	Optional
L.06.024	5D-6.1	PP cone bottom with cover	5D-6	Optional